

Genuine glass surface with high resolution colour display

X(per) P(rofessional) Series

XP200



- TFT LCD, anti-glare colour display
- Capacitive touch screen
- Sampling rate 1s
- Data recording simultaneously on up to 3 channels
- Graphical analysis including standard deviation
- Integrated flash memory with space for up to 200 data blocks, or up to three hours continuous recording
- USB port for data transfer to Smartgraph 3 (included in delivery)
- Multilingual interface
- Numerous dimensions calculated
- Online firmware update

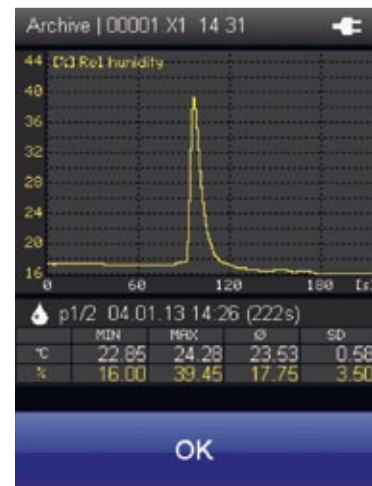
MADE IN GERMANY

Hand-held measuring device XP200 for measuring temperature and humidity



X-pert range for humidity and temperature measurements in climate and environmental technology.

Hand-held measuring device XP200		Order No.
Temperature and humidity measuring device compatible with various intelligent sensors.		5820.00
Technical data	Dimensions	170x62x34 mm
	Weight	Approx. 205g
Storage conditions	Permitted ambient temperature	-20...60°C
	Permitted rel. humidity	<90%RH non-condensing
Operating conditions	Permitted rel. humidity	<90%RH (20g/m³) non-condensing
	Permitted altitude above sea level	4000m
Power supply	Power supply	4 Alkaline LR6 AA 1.5V / USB 5V
	Active power consumption	Approx. 400mW
	Battery life passive	Approx. 1 year
	Battery life active	Min. 24 hours
Data storage	Sensor power supply	5.5V ± 10% DC, max. 200mA
	Integrated data storage	Up to 200 data/approx. 1 Mio measured values
Interface	USB	Cable and SmartGraph3 software included
Representation	Definition of measured values	2 decimal places
Display	Control	Touch screen, capacitive
	Technology	TFT, resolution 240x320, 65k colours, very good contrast due to Piezoresistive technology
Calculated measurement categories for external temperature/humidity sensors	Surface, toughened glass	Degree of hardness: 7, scratch-resistant
	Mathematical: MIN/MAX/AVG/HOLD	
	Temperature (°C/°F)	
	Rel. humidity (%RH)	
	Rel. humidity of ice (%RH)	
	Water vapour density (absolute humidity) g/m³	
	Dew point temperature °C/°F	
	Frost point temperature °C/°F	
	Mixing ratio at saturation (100%) g/kg	
	Volume fraction of water vapour /mass fraction of water vapour (%)	
	Wet-bulb temperature °C/°F	
	Ice-bulb temperature °C/°F	
	Specific Enthalpy (mass of air) kJ/kg	
	Saturation vapour pressure above ice/water (hPa)	
	Water vapour particle pressure (hPa)	
Air density kg/m³		
Accessories	Connecting cable for external sensors, 2m	8120.KAB2
	Connecting cable for external sensors, 10m	8120.KAB10



Compatible sensors for XP200		Page
Temperature/humidity	digital TFF20	20
	Allround SDI	20
	4 mm diameter SDI	21
	High temperature SDI	21
	Sintered stainless steel filter	22